

2023 - 2024 International 14ft Skiff Australian Championship
Thursday, 28 December 2023 to Thursday, 4 January 2024

Manly 16' Skiff Sailing Club, East Esplanade, MANLY, NSW

SAILING INSTRUCTIONS

1 RULES

The event will be governed by the rules as defined in the Racing Rules of Sailing and these Sailing Instructions.

2 CHANGES TO SAILING INSTRUCTIONS

Any change to the Sailing Instructions will be posted before 1000hrs on the day it will take effect, except that any change to the schedule of races will be posted by 2000hrs on the day before it will take effect.

3 NOTICES TO COMPETITORS

Notices to competitors will be posted on the Notice Board in the Sailor App (Available in your Google Play store, or Apple App store search Sailor)

4 SIGNALS MADE ASHORE

4.1 Signals made ashore will be displayed from the flag mast located on the deck at M16'SSC.

4.2 When flag AP is displayed ashore, '1 minute' is replaced with 'not less than 30 minutes' in the race signal AP. This changes race signal AP.

4.3 [DP] When Flag AP over H is displayed ashore means 'Boats shall not leave the beach. Wait for further instructions.' This changes Race Signals AP over H.

5 SCHEDULE OF RACE

Thursday	28 December, Registration/Measurement
Friday	29 December, Information Session 11:00hrs, Invitation Race, Welcome Function
Saturday	30 December, Racing
Sunday,	31 December, Racing
Monday	1 January, Lay day
Tuesday	2 January, Racing

Wednesday 3 January, Racing
Thursday 4 January, Racing and Presentation

5.2 The Practice Race will use a 'stern chaser' starting system, ie., handicap start. Starting times for each boat will be notified on the Notice Board and at the briefing. Boats will start at their allocated time. Timing will be displayed on the Race Committee boat. The starting time for the first boat to start will not be before 1400.

5.3 The first Warning Signal for all Championship races each day will be at 13:25 hours. Daily start times may be altered to achieve an even distribution of sailing conditions. Alterations will be notified in accordance with SI 2.1.

5.4 To alert boats that a race or sequence of races will begin soon, the orange starting line flag will be displayed with one sound at least five minutes before a warning signal is made.

5.5 On the last day of the regatta, no warning signal will be made after 1500hrs.

5.6 When two or more races are scheduled to be sailed back to back, the warning signal for the start of the second and subsequent races of the day will take place no sooner than 5 minutes following the close of the Finish Window of the previous race - refer SI 15.1.

6 CLASS FLAG

Class flag will be the I14 class insignia on a white background.

7 RACING AREA

Racing will be held on the waters of Sydney Harbour - refer Attachment "B".

8 COURSES

8.1 Courses will be windward leeward courses of 2 or 3 laps with all rounding marks to be rounded to port.

8.2 Attachment "A" shows the courses, including course signals, the order in which marks are to be passed, and the side on which each mark is to be rounded.

8.3 No later than the warning signal, the Race Committee boat will display the course designation and number of laps, and, may display the approximate compass bearing to Mark 1.

9 MARKS

9.1 Marks 1 and 2 will be pink inflatables.

9.2 The starting marks will be the Race Committee boat with a staff displaying an orange flag at the starboard end, and an orange cylindrical mark at the port end.

9.3 The finishing marks will be the Race Committee boat with a staff displaying a blue flag at the starboard end and an orange cylindrical mark at the port end for a windward finish, and will be a Race Committee boat with a staff displaying a blue flag at the port end and an orange cylindrical mark at the starboard end for a downwind finish.

9.4 The Race Committee boat will be a blue half cabin cruiser "Matana".

10 BLANK

11 THE START

11.1 The starting line is between a staff displaying an orange flag on the Race Committee boat and an orange cylindrical mark at the port end of the line.

11.2 A boat that does not start within five (5) minutes after her starting signal will be scored Did Not Start without a hearing. This changes RRS A4 and A5.

12 BLANK

13 THE FINISH

The finishing line will be between the Race Committee boat with a staff displaying a blue flag at the starboard end and an orange cylindrical mark at the port end for a windward finish, and will be between the Race Committee boat with a staff displaying a blue flag at the port end and an orange cylindrical mark at the starboard end for downwind finish.

14 PENALTY SYSTEM

14.1 RRS 44.1 is changed so that the Two-Turns Penalty is replaced by the One-Turn Penalty.

14.2 Penalties for breaches of RRS 41, the Equipment Inspection Regulations, the Class Rules and rules in the Notice of Race and Sailing Instructions marked [DP], are at the discretion of the Protest Committee.

15 TIME LIMITS AND TARGET TIME

15.1 The time limits for races are as follows:

Mark 1 Time Limit, 40 minutes

Times Limit for all races, 2.5 hrs

Finishing Window for all races, 20 minutes

Target times, 90 minutes, if only 1 race schedules for the day, and 60 minutes if multiple races in 1 day

15.2 Failure to meet the Target Times will not be grounds for redress. This changes RRS 62.1(a).

15.3 If no boat has passed Mark 1 within the Mark 1 Time Limit the race will be Abandoned.

15.4 Boats which fail to finish within the Finishing Window, but which are still deemed to be racing by the Race Committee, may be scored an allocated place based on their current position. Neither the allocation of a finish place nor the failure to allocate a finish place will be grounds for redress. This changes RRS 28.1, 28.2, 35, A4 and A5

16 HEARING REQUESTS

16.1 Protest forms are available at the Reception Desk. Protests and requests for redress or reopening shall be delivered there within the appropriate time limit.

16.2 The protest time limit is 60 minutes after the last boat has finished the last race of the day or the Race Committee signals no more racing today, whichever is later.

16.3 Notices will be posted no later than 30 minutes after the protest time limit to inform competitors of hearings in which they are parties or named as witnesses. Hearings will be held in the protest room, located at the rear of the Regatta Office, beginning at the time posted.

16.4 Notices of protests by the Race Committee or Protest Committee will be posted to inform boats under RRS 61.1(b).

16.5 On the last scheduled day of racing a request for redress based on a Protest Committee decision shall be delivered no later than 30 minutes after the decision was posted. This changes RRS 62.2.

17 SCORING

17.1 The Low Point system of Appendix A will apply as modified in this clause.

17.2 A minimum of three (3) races are required to be completed to constitute a series.

17.3 When fewer than 6 races have been completed, a boat's series score will be the total of her race scores. When 6 or more races have been completed, a boat's series score will be the total of her race scores excluding her worst score.

17.4 To request correction of an alleged error in posted race or series results, a boat may complete a scoring enquiry form available at the Regatta Office

18 SAFETY REGULATIONS [DP]

18.1 Sign-on and sign-off: for safety reasons, each departure from and return to the beach, including when returning ashore indicated by flag AP / H or N / H, will require a sign-on or sign-off. This is mandatory, and must be done personally by the helm of the boat before leaving to go on the water and immediately when returning to shore. Details of the sign-on/sign-off procedures will be provided on the Official Notice Board.

18.2 A boat that retires from a race shall notify the Race Committee as soon as possible.

18.3 All competitors shall wear an approved personal flotation device (PFD) at all times while afloat except briefly while changing or adjusting clothing or personal equipment. Each PFD is to be in good condition and in accordance with the Australian Sailing Special Regulations. Attention is drawn to RRS Fundamental Rule 1.2.

19 SUBSTITUTION OF CREW OR EQUIPMENT [DP]

19.1 Substitution of competitors will not be allowed without prior written approval of the Race Committee.

19.2 Substitution of damaged or lost equipment will not be allowed unless authorized by the Race Committee. Requests for substitution shall be made to the committee at the first reasonable opportunity.

19.3 Attention is drawn to I14 Class Rule 17 (e) (vi) (iii) which states: Any application to change a mast, spar, sail, rudder, centreboard/dagger board, or hydrofoil must be in writing to the Race Committee and permission will be granted provided (a) the discarded mast, spar, sail, rudder, centreboard/dagger board or hydrofoil is damaged beyond repair and is not used again by that boat during the regatta and (b) any official stamp on the discarded mast, spar, sail, rudder, centreboard/dagger board, and hydrofoil has been appropriately crossed;

20 EQUIPMENT AND MEASUREMENT CHECKS

A boat or equipment may be inspected at any time for compliance with the class rules and Sailing Instructions. On the water, a boat can be instructed by a member of the Race Committee to proceed immediately to a designated area for inspection.

21 EVENT ADVERTISING [DP]

Boats shall display any event and sponsor advertising supplied by the OA. If provided, the OA shall provide instructions for their use.

22 OFFICIAL BOATS

Official boats may display the M16SSC burgee.

23 SUPPORT BOATS [DP]

23.1 Support boats shall be registered with the OA at Registration.

23.2 Support boats must carry a VHF radio capable of operating on channels 71, 72, 73 and 77.

23.3 Team leaders, coaches and other support personnel shall stay outside areas where boats are racing from the time of the preparatory signal for the first start until all boats have finished or retired or the Race Committee signals a postponement, general recall or abandonment.

24 TRASH DISPOSAL [DP]

Trash may be placed aboard support or official boats

25 BLANK

26 RADIO COMMUNICATION [DP]

A boat shall neither make radio or data transmissions while racing nor receive radio or data communications not available to all boats. This restriction also applies to mobile telephones.

27 PRIZES

27.1 Prizes will be awarded in accordance with the NOR.

27.2 Additional trophies may be awarded at the discretion of the OA and/or the class associations.

28 RISK STATEMENT

Competitors and support teams participate in the regatta entirely at their own risk and they are reminded of the provisions of RRS 4, Decision to Race. Sailing is by its nature an unpredictable sport and therefore involves an element of risk. By taking part in the event, each competitor agrees and acknowledges that:

- (a) They are aware of the inherent element of risk involved in the sport and accept responsibility for the exposure of themselves, their crew and their boat to such inherent risk whilst taking part in the event;
- (b) They are responsible for the safety of themselves, their crew, their boat and their other property whether afloat or ashore;
- (c) They accept responsibility for any injury, damage or loss to the extent caused by their own actions or omissions;
- (d) By participating in any race, they are satisfied that their boat is in good order, equipped to sail in the event and they are fit to participate;
- (e) The provision of a race management team, safety boats, umpires and other officials and volunteers by the organiser does not relieve them of their own responsibilities;
- (f) The provision of safety boat cover is limited to such assistance, particularly in extreme weather conditions, as can be practically provided in the circumstances.
- (g) They will familiarize themselves with any venue/event specific risks, adhere to rules and information produced for the venue/event and attend any venue/event safety briefings.

29 INSURANCE [DP]

Each participating boat shall be insured with valid third-party liability insurance with a minimum cover of AUD \$5,000,000 per incident or the equivalent (recommended AUD\$10,000,000).

30 RIGHTS TO USE NAME AND LIKENESS

By participating in this event, competitors automatically grant to the OA and the event sponsors the right, in perpetuity, to make, use, and show, at their discretion, any photography, audio and video recordings, and other reproductions of them made at the venue or on the water from the time of their arrival at the venue, until their final departure, without compensation

31. HARBOUR SAFETY

All competitors shall observe the Ship and Ferry activated Exclusion Zone as described in **ATTACHMENT B**. This Exclusion Zone is to be considered an "Obstruction".

Note: All ferries are now fitted with bow cameras that continuously record the vessel's progress in addition to 25 cameras located around Sydney Harbour, which monitor ferries and record close quarter incidents. The cameras may be used for

enforcement action by Transport for NSW. Fines in excess of \$500 may apply for non-compliance.

Sailors are reminded that activity contrary to Maritime Legislation, Exemption Order Conditions or failure to report on-water incidents may result in the cancellation of the Club's Exemption Order.

Competitors attention is drawn to The Bombora Danger marks off Dobroyd Point and should exercise caution if sailing in their vicinity.

ATTACHMENT A: COURSES

The course to be sailed will be displayed on a board with the letter L, for Course L, or W, for Course W, on the Committee boat prior to or with the Warning Signal.

Numeral Pennant 2 will be flown prior to or with the Warning Signal to indicate that 2 laps are to be sailed. Numeral Pennant 3 will be flown prior to or with the Warning Signal to indicate that 3 laps are to be sailed.

COURSE L (downwind finish, all marks to port)

2 laps, Start, Mark 1, Mark 2, Mark 1, Finish

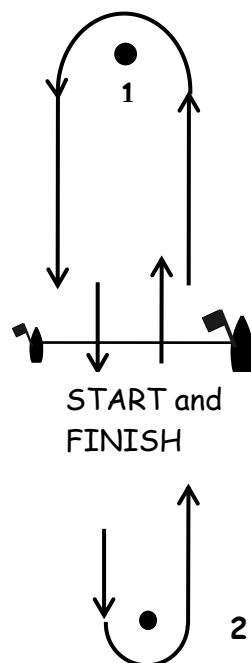
3 laps, Start, Mark 1, Mark 2, Mark 1, Mark 2, Mark 1, Finish

COURSE W (upwind finish, all marks to port)

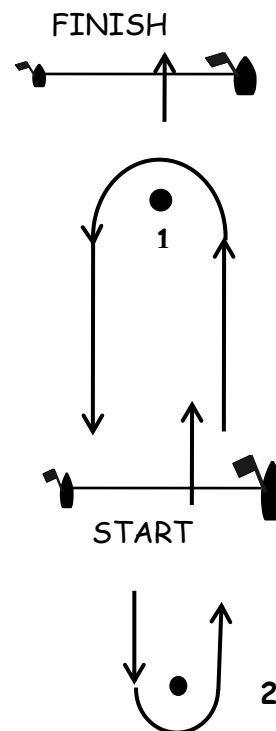
2 laps: Start, Mark 1, Mark 2, Mark 1, Mark 2, Finish

3 laps: Start, Mark 1, Mark 2, Mark 1, Mark 2, Mark 1, Mark 2, Finish

Course L



Course W



NOTE:

1. Course L: Start or Finish Lines NOT necessarily to windward of Mark 2.

2. Course W: Start Line NOT necessarily to windward of Mark 2

ATTACHMENT B: Ship & Ferry Activated Exclusion Zone (Transport for NSW Exemption Order Condition)

- All competitors SHALL maintain a minimum distance of 500m from the bow of any ship and 200m from the bow of any ferry, and no less than 30m from the sides/stern of any ship or ferry underway.
- Competitors shall comply with the Navigation Collision Regulations of NSW. These regulations permit ferries flying the orange diamond priority over sail.
- Competitors shall not interfere with inbound or outbound shipping.
- An RMS Maritime or Sydney Harbour Ports vessel may escort a vessel from a position ahead of the ship or ferry.
- When not racing keep at least 200 m clear of any ferries displaying the Orange Diamond.

RMS Maritime - Yacht Person's Brief

1. Be Safe!

2. Observe Collision Regulations and in particular Rule 1 (b) and Rule 2(a)(b) i.e.: Nothing in these Rules shall exonerate any vessel, or the owner, master or crew thereof, from the consequences of any neglect to comply with these Rules or of the neglect of any precaution which may be required by the ordinary practice of seamen, or by the special circumstances of the case. In complying with these Rules due regard shall be had to all dangers of navigation and collision and to any special circumstances, including the limitations of the vessels involved, which may make a departure from these Rules necessary to avoid immediate danger. What this means is that if you're about to be involved in a collision, having stood on or given way in accordance with the Rule; every party involved is responsible in taking avoiding action to prevent a collision.

3. All craft are to keep 500m clear ahead and 30m clear of each side and stern of seagoing ships. In Sydney Harbour and Botany Bay, seagoing ships over 100m length are escorted by a Sydney Ports' vessel, orange hull and yellow superstructure with flashing red and blue lights. Craft are not to pass between the escort vessel and the seagoing ship under escort. Local Rules require sail craft to keep out of the way of ferries displaying the orange diamond. When necessary (after hearing 5 Short blasts) give priority to the Ferry. Pass the ferry clear at least 200m ahead and 30 m either side and astern.

4. Be mindful of larger ships' bow flare. When closing any vessel, to prevent being overrun, ensure that you remain within sight of the officer of the watch on the vessel's

bridge. Beware of overhanging bows and other parts of ship that might obstruct this line of sight. This means that your vessel may disappear from sight inside 200-400 m from the bows of very large ships.

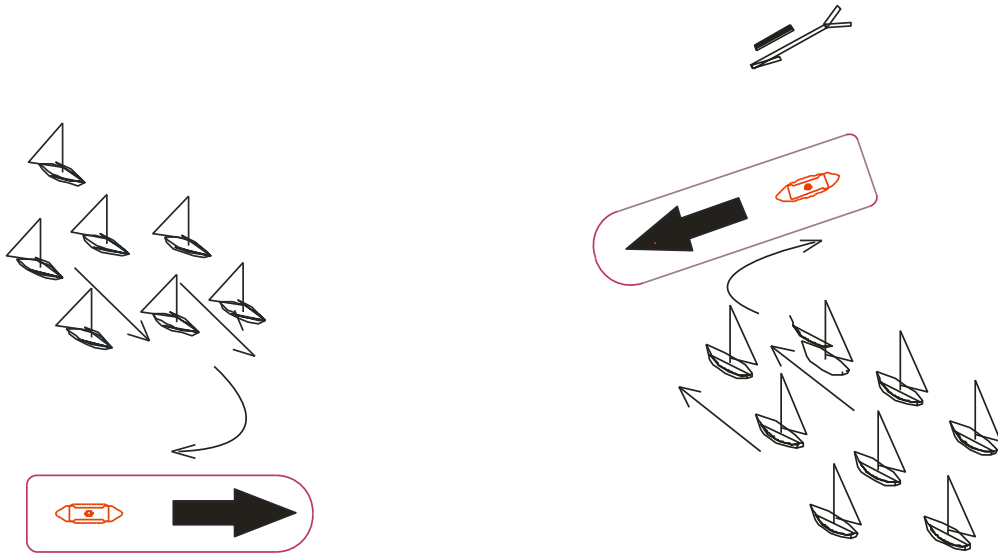
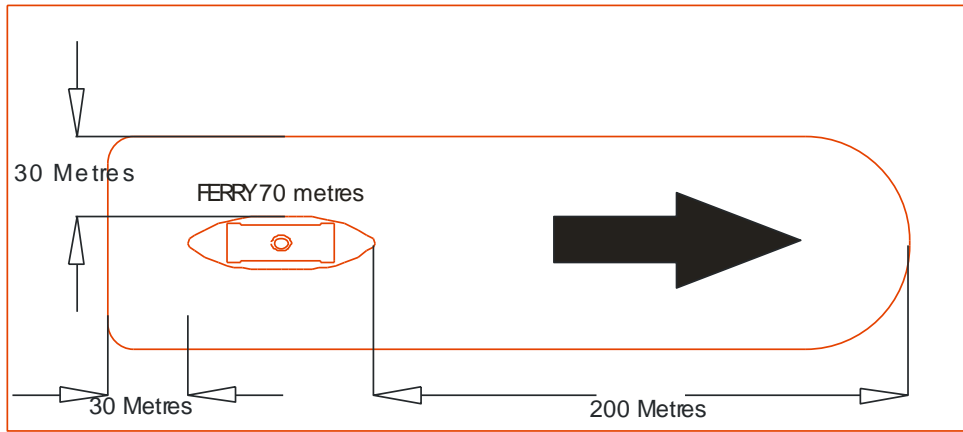
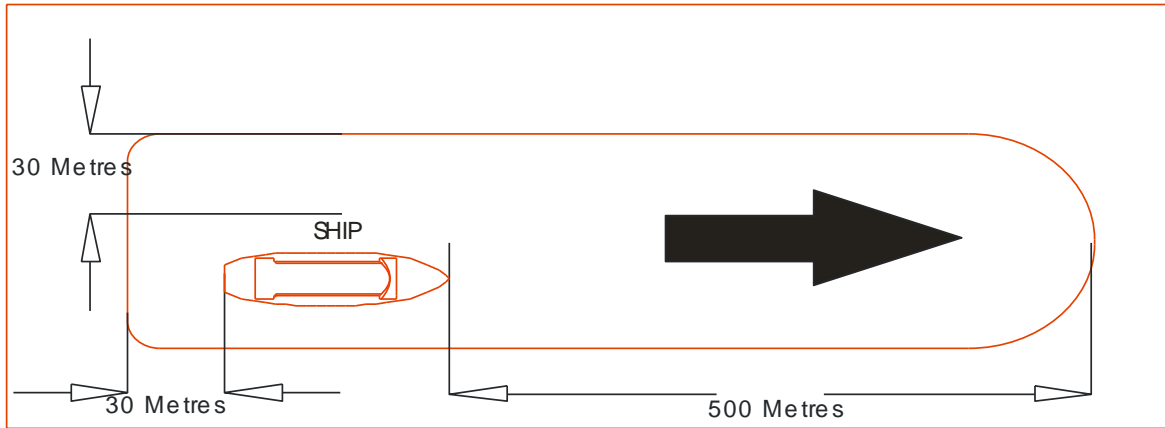
Shipping Sound Signal Meanings:

One short blast - I am altering course to starboard (right).

Two short blasts - I am altering course to port (left).

Three short blasts - I am operating engines astern (stopping).

Five (or more) short blasts - I'm unsure of your intentions and I doubt whether you are taking enough avoiding action to avoid collision.



**SHIP & FERRY ACTIVATED
EXCLUSION ZONE**